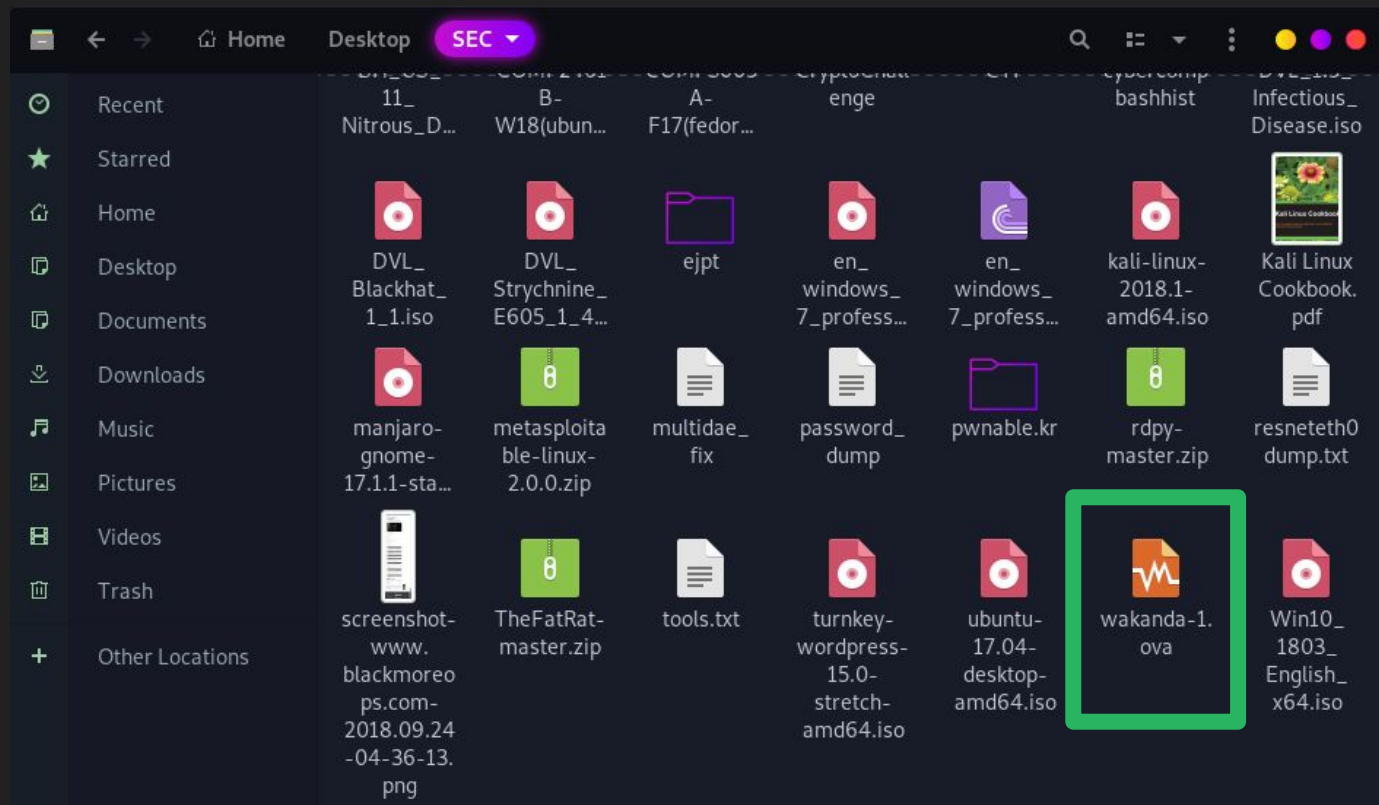




Carleton
Cyber
Security
Club

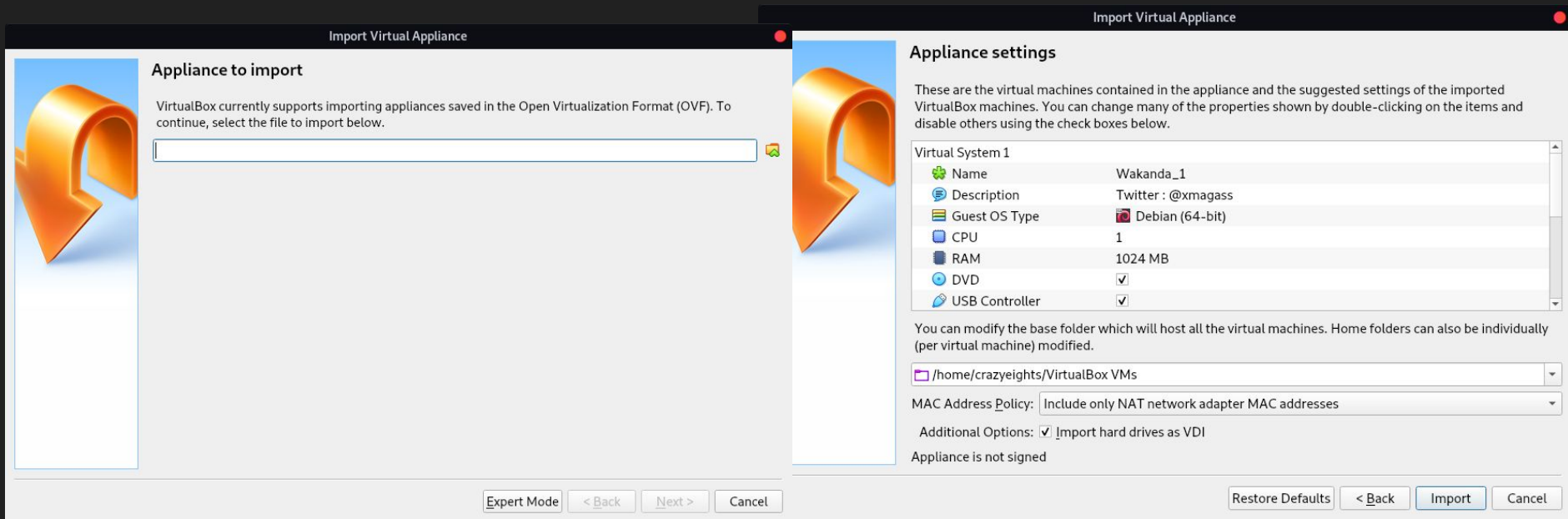
Week 0.1: Setting up VirtualBox VMs

Virtualbox VM's



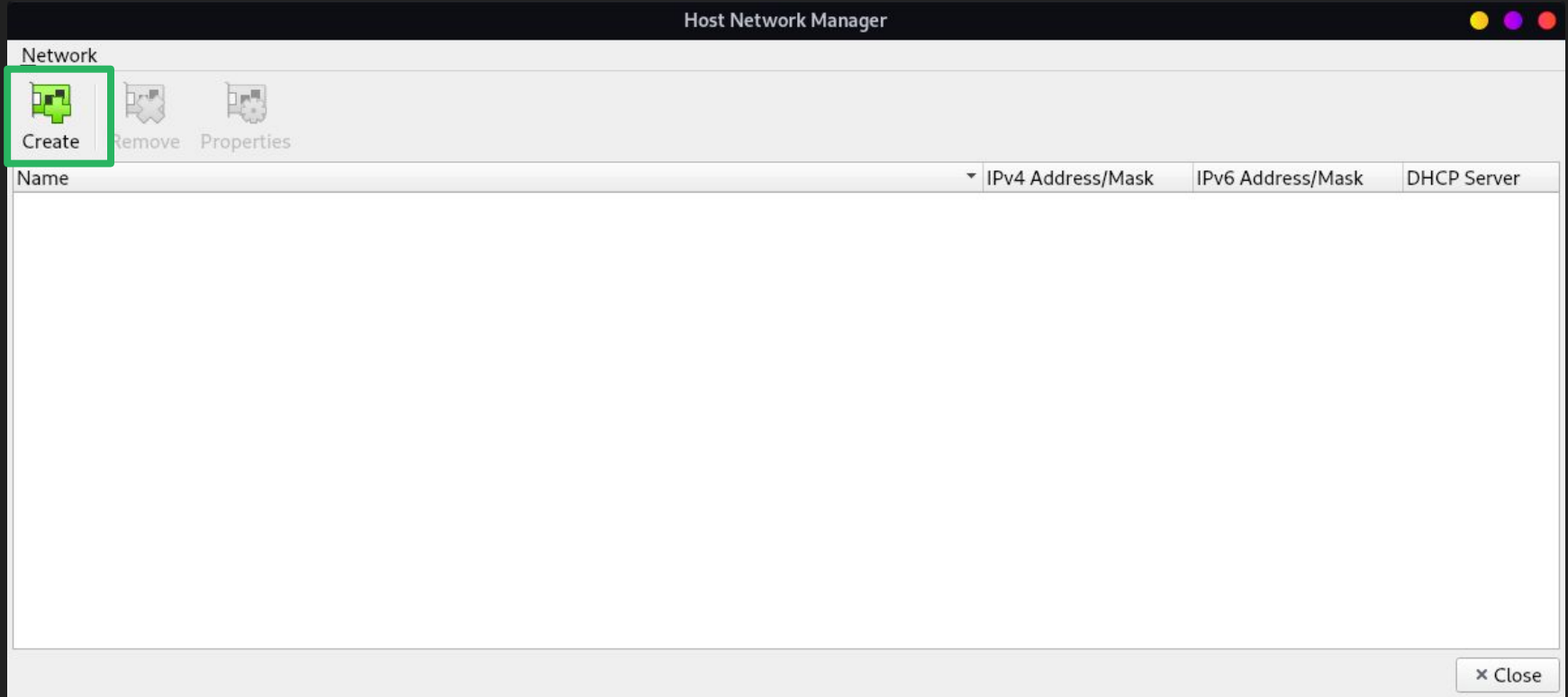
Importing VM

Click File > Import Appliance
Follow the Instructions



Configuring the Network

Click File > Host Network Manager



Configuring the Network

Host Network Manager

Network

Create

Remove

Properties

Name	IPv4 Address/Mask	IPv6 Address/Mask	DHCP Server
vboxnet0	192.168.56.1/24		<input checked="" type="checkbox"/> Enable

Adapter

DHCP Server

☐ Configure Adapter Automatically

☒ Configure Adapter Manually

IPv4 Address:

192.168.99.99

IPv4 Network Mask:

255.255.255.0

IPv6 Address:

IPv6 Prefix Length:

0

Reset

Apply

Close

Configuring the Network

Host Network Manager

Network

CreateRemoveProperties

Name	IPv4 Address/Mask	IPv6 Address/Mask	DHCP Server
vboxnet0	192.168.56.1/24		<input checked="" type="checkbox"/> Enable

AdapterDHCP Server

☒ Enable Server

Server Address:192.168.99.100

Server Mask:255.255.255.0

Lower Address Bound:192.168.99.101

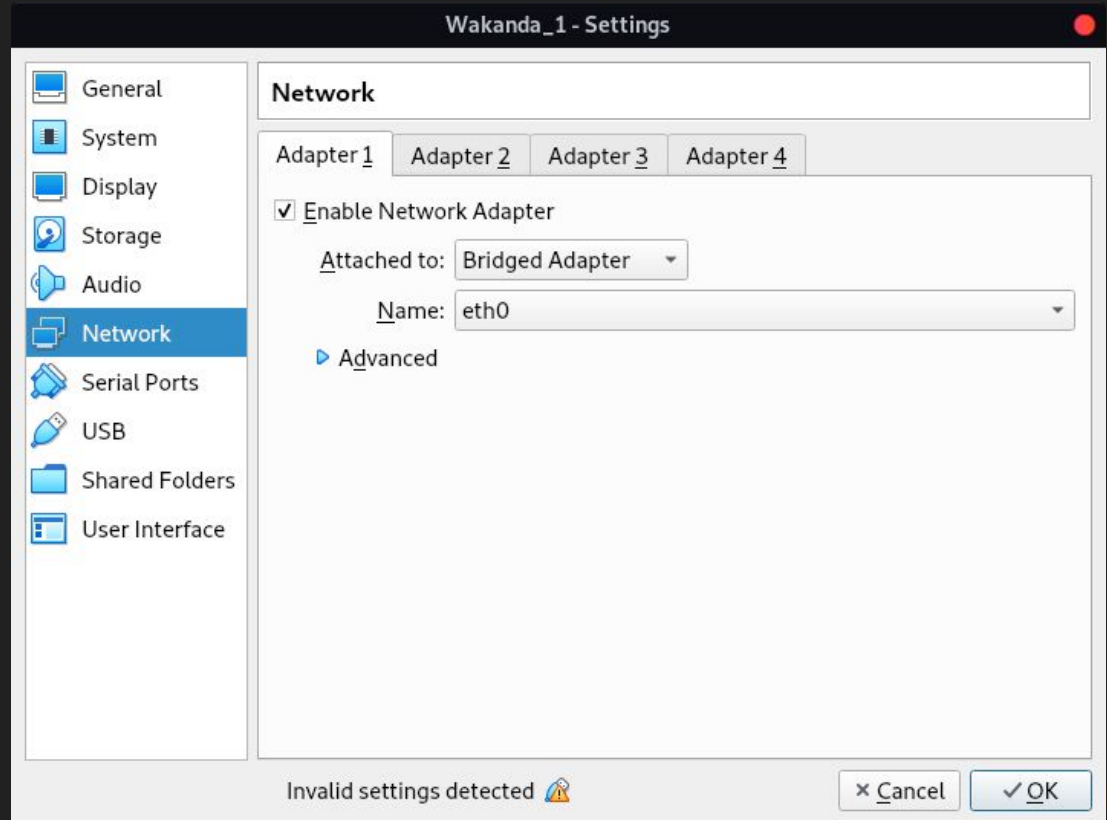
Upper Address Bound:192.168.99.254

Reset

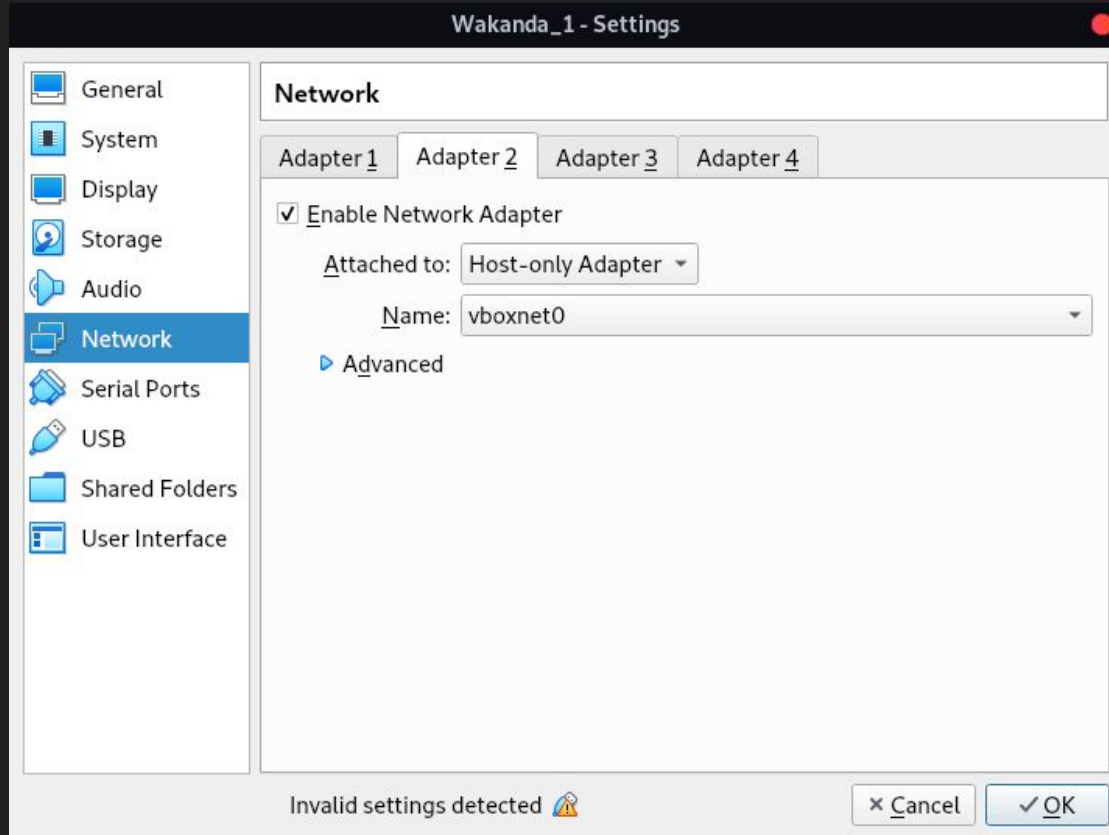
ApplyClose

Configuring the Device Network Settings

Right Click and go
to Settings

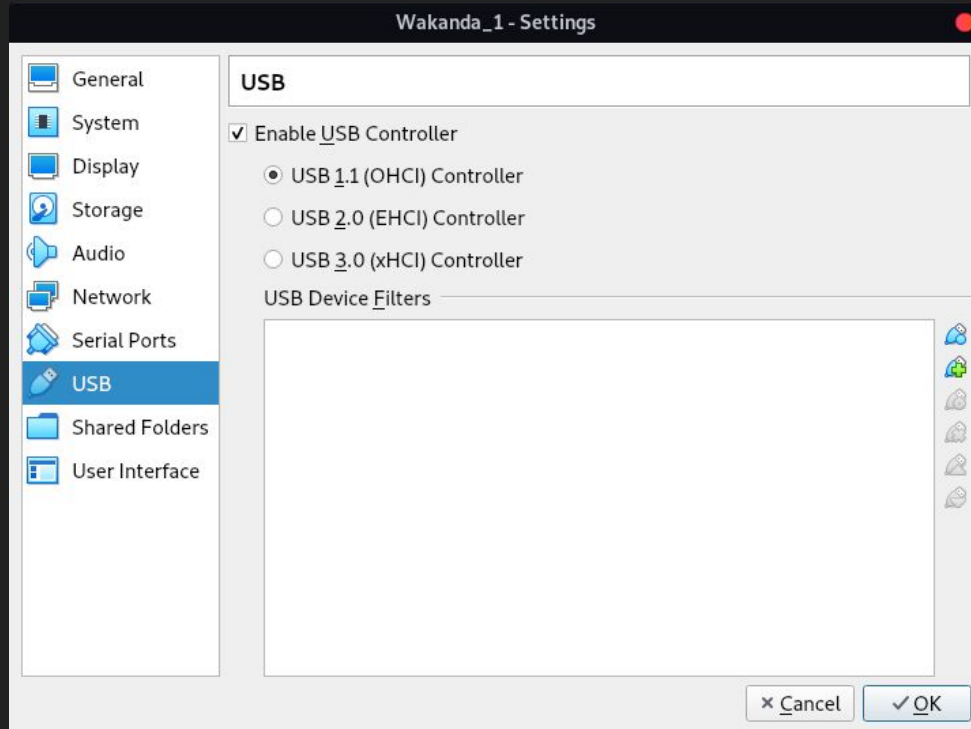


Configuring the Device Network Settings



Configuring the Device Network Settings

If there is an invalid settings warning:



Find the device:

```
crazyeights@superchicken: ~  
File Edit View Search Terminal Help  
crazyeights@superchicken:~$ ifconfig  
eth0: flags=4163<UP,BROADCAST,RUNNING,MULTICAST> mtu 1500  
    inet 192.168.0.182 netmask 255.255.255.0 broadcast 192.168.0.255  
    inet6 fe80::e2d5:5eff:fea8:8422 prefixlen 64 scopeid 0x20<link>  
    ether e0:d5:5e:a8:84:22 txqueuelen 1000 (Ethernet)  
    RX packets 320288 bytes 297639000 (283.8 MiB)  
    RX errors 0 dropped 1 overruns 0 frame 0  
    TX packets 203581 bytes 56454528 (53.8 MiB)  
    TX errors 0 dropped 0 overruns 0 carrier 0 collisions 0  
    device memory 0xf7600000-f761ffff  
  
lo: flags=73<UP,LOOPBACK,RUNNING> mtu 65536  
    inet 127.0.0.1 netmask 255.0.0.0  
    inet6 ::1 prefixlen 128 scopeid 0x10<host>  
    loop txqueuelen 1000 (Local Loopback)  
    RX packets 28 bytes 1596 (1.5 KiB)  
    RX errors 0 dropped 0 overruns 0 frame 0  
    TX packets 28 bytes 1596 (1.5 KiB)  
    TX errors 0 dropped 0 overruns 0 carrier 0 collisions 0  
  
vboxnet0: flags=4163<UP,BROADCAST,RUNNING,MULTICAST> mtu 1500  
    inet 192.168.99.99 netmask 255.255.255.0 broadcast 192.168.99.255  
    inet6 fe80::800:27ff:fe00:0 prefixlen 64 scopeid 0x20<link>  
    ether 0a:00:27:00:00:00 txqueuelen 1000 (Ethernet)
```

Find the device:

```
crazyheights@superchicken: ~  
File Edit View Search Terminal Help  
crazyheights@superchicken:~$ nmap -PS 192.168.99.0-255  
Starting Nmap 7.70 ( https://nmap.org ) at 2019-05-06 11:43 EDT  
Nmap scan report for 192.168.99.99  
Host is up (0.000056s latency).  
Not shown: 998 closed ports  
PORT      STATE SERVICE  
80/tcp    open  http  
902/tcp   open  iss-realsecure  
  
Nmap done: 256 IP addresses (1 host up) scanned in 14.75 seconds  
crazyheights@superchicken:~$ ping 192.168.99.99  
PING 192.168.99.99 (192.168.99.99) 56(84) bytes of data.  
64 bytes from 192.168.99.99: icmp_seq=1 ttl=64 time=0.017 ms  
64 bytes from 192.168.99.99: icmp_seq=2 ttl=64 time=0.033 ms  
64 bytes from 192.168.99.99: icmp_seq=3 ttl=64 time=0.038 ms  
c64 bytes from 192.168.99.99: icmp_seq=4 ttl=64 time=0.034 ms  
^C  
--- 192.168.99.99 ping statistics ---  
4 packets transmitted, 4 received, 0% packet loss, time 52ms  
rtt min/avg/max/mdev = 0.017/0.030/0.038/0.009 ms  
crazyheights@superchicken:~$
```